

IDEA Bolt

Rim Type



PRODUCT

Panic exit device of the rim type, with top/bottom Bolt locking system.

APPLICATION

The panic exit bars (rim type) of the IDEA Bolt range are the ideal solution for type-approved emergency exits. The Bolt system on the IDEA range is an innovative closure system for panic exit devices that guarantees exceptionally high resistance to breakage. Thanks to this feature, installation is particularly recommended in places where burglary protection is required. Installation is extremely easy, thanks to the bolts protrusion adjustment system. Equipped with a keep, IDEA Bolt is suitable for every type of material (aluminium, wood, PVC, iron and glass), and its wide range resolves any application problem. The IDEA Bolt range is certified in accordance with Standard UNI EN 1125, and bears the EC mark. The entire product range has been tested using the parameters laid down in the Standard (up to 500,000 cycles with door weighing over 200 kg). There are versions with two or three closure points, reversible and fire resistant. Wide choice of accessories (all interchangeable with the PUSH Bolt range), including a vast selection of external commands.

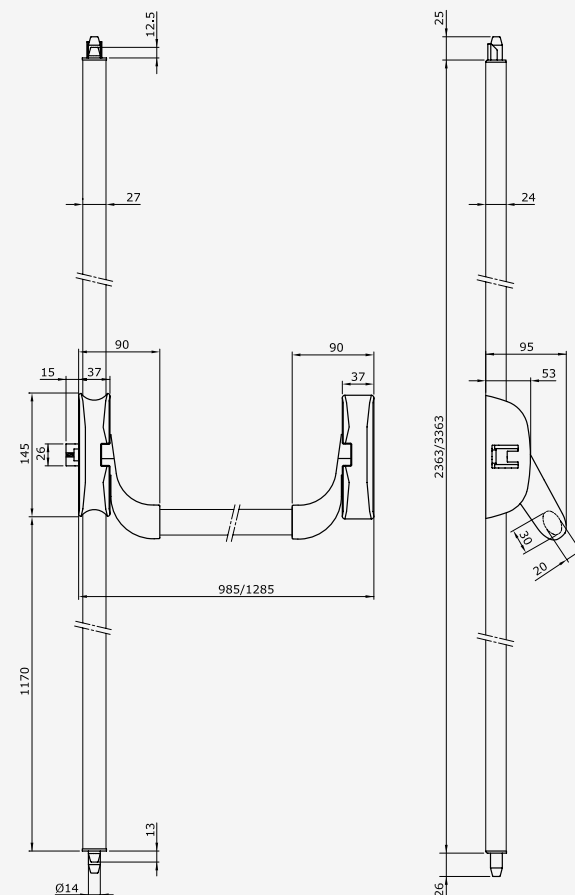
The IDEA Bolt (rim) range has the same design characteristics as the PUSH version, so the different products can be used in a single environment, still keeping the same appearance.

RANGE

- Fire resistant versions with self-locking steel latchbolts.

TECHNICAL FEATURES

- **Durability:** 500,000 cycles.
- **Door mass:** over 200 kg.
- **Door dimensions:**
 - maximum width up to 1500mm.
 - maximum height up to 3400mm.
- **Versions:** Fire resistant and non fire resistant.
- **Resistance to corrosion:** 240 hours in a saline environment.
- **Bar protrusion:** less than 100mm.
- **Operating temperature:** Tested at temperatures from -25°C to +60°C.
- **Colours available:**
 - black, white, metal grey, PVD-stainless steel.
- **Anti-bacterial protection:** AntiGerm on the painted versions.



IDEA Bolt

Rim Type

HIGHLIGHTS

- Certified: EC marking in accordance with Regulation 305/2011 EC (CPR);
- UKCA Marking in accordance with Regulation 465/2019 UK.
- Security: top/bottom locking with self-locking, rotating steel tips of 14mm diameter.
- Quick installation: equipped with an automatic spring-action rod attachment system, with no need for screws.
- Fastening sub-plates are available to speed up installation on the construction site.
- Easy adjustment: the tips fastening system allows for easy adjustments, even after installation.
- Design: top/bottom locking system integrated in the rod covers.
- Modularity: wide range of accessories.
- Reversibility: possibility of both right-hand and left-hand configuration.
- Adaptability: suits any type of frame and configuration (aluminium, PVC, wood, etc.) thanks to the patented strike plates included in the pack.
- Thanks to the BELVEDERE kit, they can even be installed on glass doors.
- Configurable: installation on both single and double leaf doors.
- Reliability: the entire range has been tested using the parameters laid down in the Standard UNI EN1125 (up to 500,000 cycles).
- Easy installation: three different fastening possibilities, depending on the frame.
- Solidity: with an oval anti-rotation push bar in steel.
- Finishes: black, metal grey, white, with ANTIGERM antibacterial treatment.
- Special versions: PVD-stainless steel, with internal mechanism in 100% stainless steel.
- Controllable: thanks to the external Trim-Tronic control or micro-switch.

STANDARDS

- EC marking in accordance with Regulation 305/2011 EC (CPR)
- UKCA marking in accordance with Regulation 465/2019 UK.
- Certified functional testing results: from -25°C to +60°C.
- Certified functional testing results: up to 500,000 cycles.

EN1125:2008

- Classification | 3 | 7 | 7 | A | 1 | 4 | 2 | 2 | A | A |
for non fire resistant devices.
- Classification | 3 | 7 | 7 | B | 1 | 4 | 2 | 2 | A | A |
for fire resistant devices.
- Classification | 3 | 7 | 7 | B | 1 | 4 | 2 | 2 | A | A |
for PVD-stainless steel fire resistant devices.

MATCHING PRODUCTS

- External Trim and Trim-Tronic controls.
- Micro-switches.
- Special strike plates for PVC and aluminium.
- Hold-open kit.
- Belvedere kit for installation on glass doors.
- Retrofit plates.

