

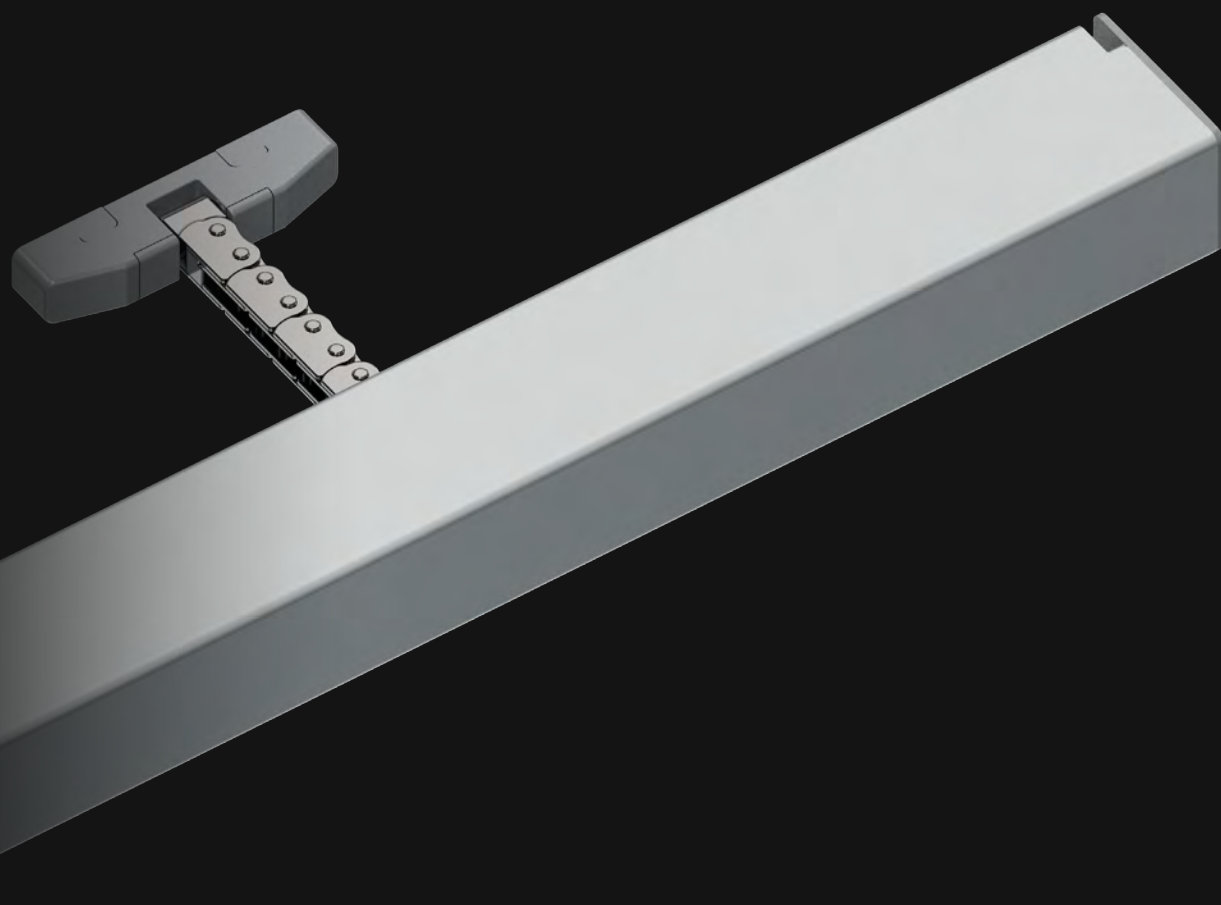
SIRIUS

24 Vdc | 230 Vac

Chain actuator

Force in push and pull action 300 N

Selectable stroke 130 - 200 - 300 - 400 mm

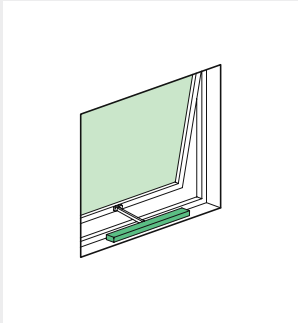


The New Star in the UCS constellation.

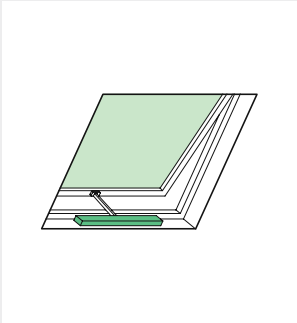
- › The new slim actuator for Natural Ventilation, with aluminum case cover and invisible brackets.
- › Double link chain for 300 N force.
- › Chain exit in central position.
- › Selectable strokes through dip-switches: 130 mm, 200 mm, 300 mm, 400 mm.
- › Exclusive system for quick and easy installation:
 - › Invisible actuator brackets: the brackets slide into the slots on the actuators, locked by side covers without screws.
 - › The chain terminal placed into the slot on the slim sash connector is locked by a clip cover without screws. Quick release for an easy window cleaning.
- › The manual closing position regulation is not required: stop in closing position is regulated by an electronic limit switch control.
- › Electronic stop in the intermediate positions in case of overload.
- › Double electric insulation actuator (no electric connection to earth is needed).

For installation remarks refer to the section at page 33 or contact UCS's technical department for further information.

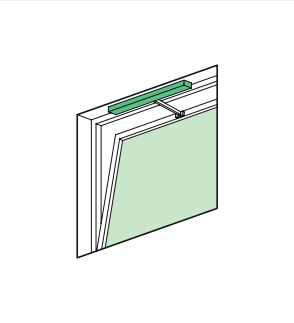
OUTWARD OPENING



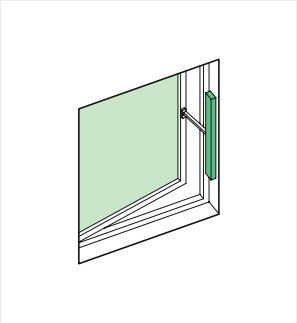
Top hung window.



Top hung roof window.



Bottom hung window.

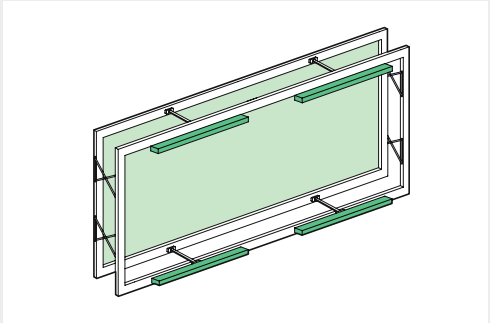


Side hung window.

LEGEND

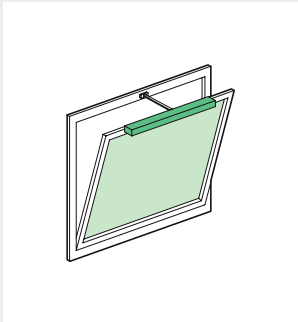
Common application

Special application

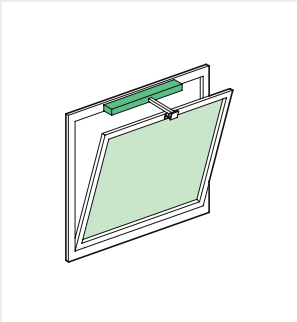


Parallel window.

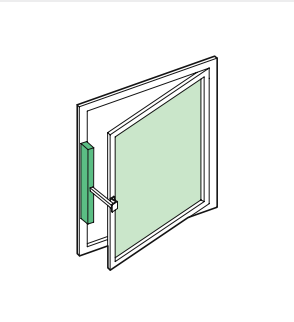
INWARD OPENING



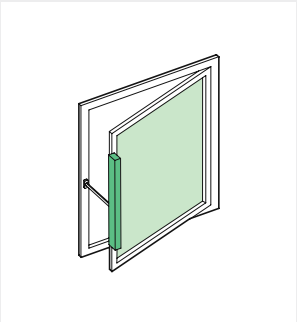
Bottom hung window.



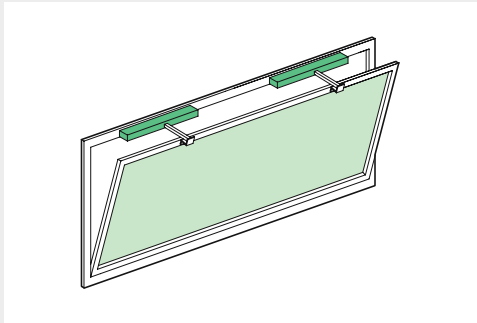
Bottom hung window.



Side hung window.



Side hung window.



Bottom hung window.



INTERCHANGEABLE AND CUSTOMIZABLE ALUMINUM COVER



Sirius Chain actuators are supplied with an aluminum case cover that can be easily removed and painted (or customized) according to the final customer requirements. Aluminum case covers are also available as spare part/accessory; UCS distributors can offer a wide range of color/customization options.

INVISIBLE ACTUATOR BRACKETS, INSTALLATION WITHOUT SCREWS/TOOLS



QUICK RELEASE CHAIN CONNECTOR, INSTALLATION WITHOUT SCREWS/TOOLS



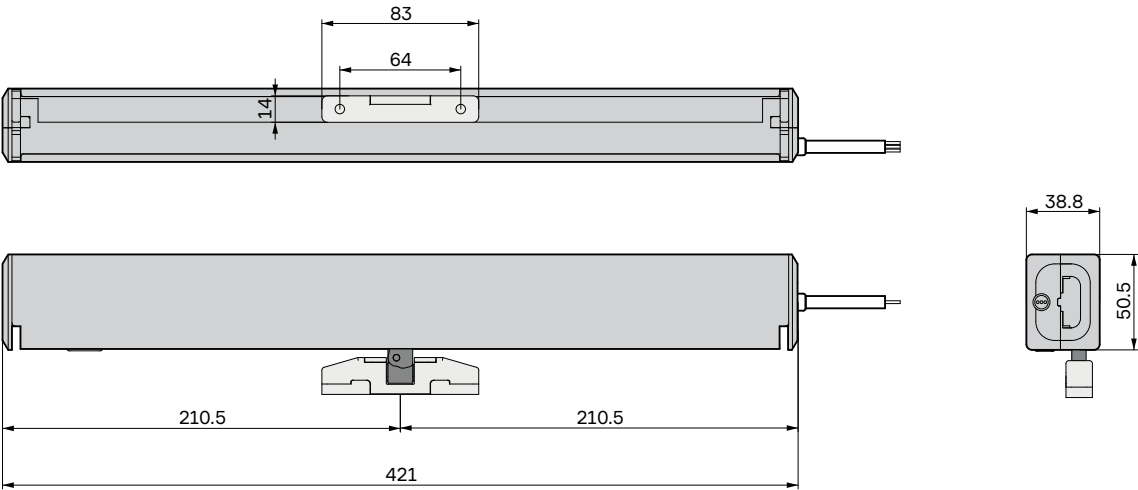
SIRIUS

TECHNICAL DATA

VERSION	AC VERSION	DC VERSION
VOLTAGE SUPPLY	230 Vac ± 10%	24 Vdc ± 10%
CURRENT ABSORPTION (max load)	0,14 A	0,8 A
OPERATION	OP / COM / CL	polarity inversion
MAX FORCE (see force/stroke diagram)	300 N	300 N
OPENING SPEED	≈ 7 mm/s	≈ 7 mm/s
CLOSING SPEED	≈ 7 mm/s	≈ 7 mm/s
LOCKING FORCE	1200 N	1200 N
DUTY CYCLE	30%	30%
PARALLEL CONNECTION	Yes	Yes
LIMIT STOP	Electronic	Electronic
SAFETY STOP	Electronic	Electronic
PROTECTION CLASS	IP40	IP40

DIMENSIONS

Chain connector included.



SYNCHRO

The SIRIUS SYNCHRO versions are equipped with an integrated speed synchronization control board for the installation of more than one actuator on the same vent, avoiding any external control panel (max 4 actuators + E-Lock).
Available also in AC version.

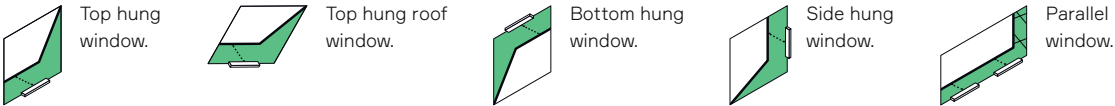
PART No.

AC POWER SUPPLY (230 Vac)

MODEL	SYNCHRO	COVER/BRACKETS	CABLE	STROKE	→ COLOUR / ↓ PART No.		
					SILVER ANODIZED	BLACK RAL 9005	WHITE RAL 9010
SIRIUS AC	-	Included for Outward opening	1,5 m 3 wires + earth	Selectable: 130/200/ 300/400 mm	48246K	48247L	48248M
	-	Included for Inward opening	1,5 m 3 wires + earth	Selectable: 130/200/ 300/400 mm	48249N	48250O	48251P
	-	Not included	1,5 m 3 wires + earth	Selectable: 130/200/ 300/400 mm	48243H	48244I	48245J
SIRIUS AC SYNCHRO	Yes	Included for Outward opening	1 x 2,90 m cable 5 wires + earth	Selectable: 130/200/ 300/400 mm	48255T	48256U	48257V
	Yes	Included for Inward opening	1 x 2,90 m cable 5 wires + earth	Selectable: 130/200/ 300/400 mm	48258W	48259X	48260Y
	Yes	Not included	1 x 2,90 m cable 5 wires + earth	Selectable: 130/200/ 300/400 mm	48252Q	48253R	48254S

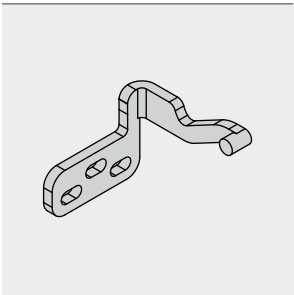
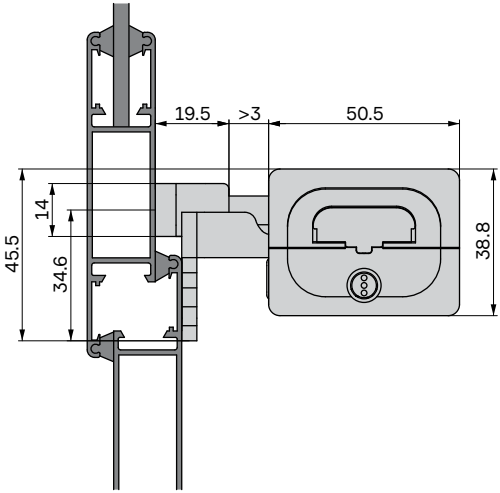
DC POWER SUPPLY (24 Vdc)

MODEL	SYNCHRO	COVER/BRACKETS	CABLE	STROKE	→ COLOUR / ↓ PART No.		
					SILVER ANODIZED	BLACK RAL 9005	WHITE RAL 9010
SIRIUS DC	-	Included for Outward opening	1,5 m 2 wires	Selectable: 130/200/ 300/400 mm	48264C	48265D	48266E
	-	Included for Inward opening	1,5 m 2 wires	Selectable: 130/200/ 300/400 mm	48267F	48268G	48269H
	-	Not included	1,5 m 2 wires	Selectable: 130/200/ 300/400 mm	48261Z	48262A	48263B
SIRIUS DC SYNCHRO	Yes	Included for Outward opening	2,90 m 4 wires	Selectable: 130/200/ 300/400 mm	48273L	48274M	48275N
	Yes	Included for Inward opening	2,90 m 4 wires	Selectable: 130/200/ 300/400 mm	48276O	48277P	48278Q
	Yes	Not included	2,90 m 4 wires	Selectable: 130/200/ 300/400 mm	48270I	48271J	48272K



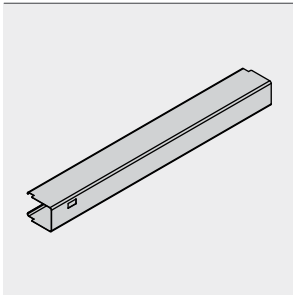
INSTALLATION EXAMPLE 01

On the frame with pivoting bracket.



Front bracket kit

INCLUDED - 48286Y

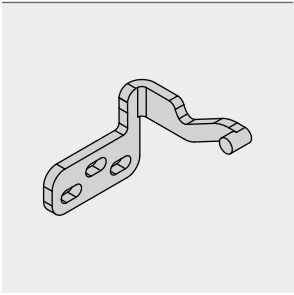
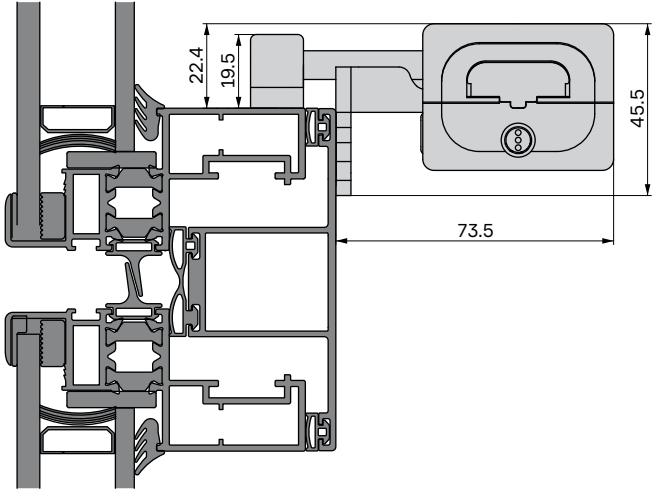


Cover for outward opening

SILVER ANODIZED	48279R
BLACK RAL 9005	48281T
WHITE RAL 9010	48280S

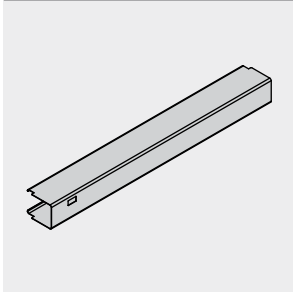
INSTALLATION EXAMPLE 02

Concealed vent with pivoting bracket.



Front bracket kit

INCLUDED - 48286Y

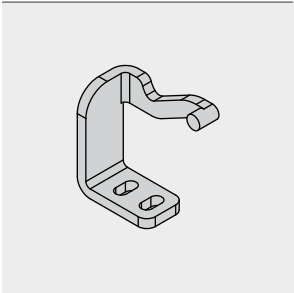
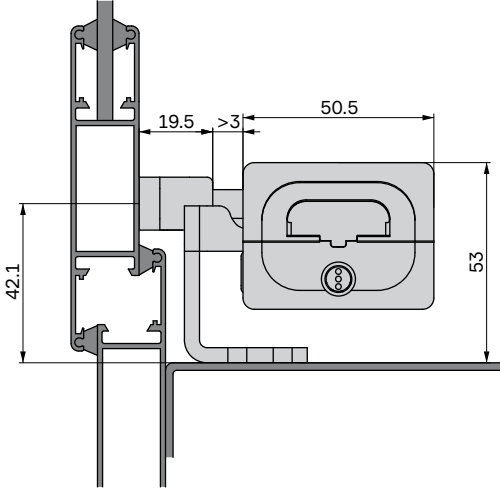


Cover for outward opening

SILVER ANODIZED	48279R
BLACK RAL 9005	48281T
WHITE RAL 9010	48280S

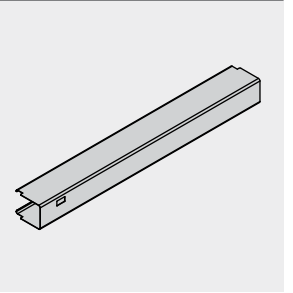
INSTALLATION EXAMPLE 03

On the windowsill with L pivoting bracket.



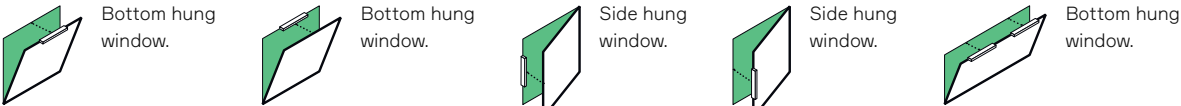
L pivoting bracket kit

STAINLESS STEEL 48285X



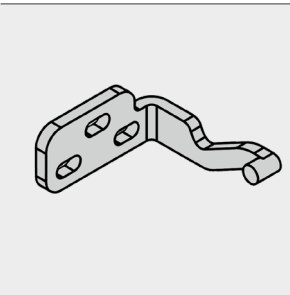
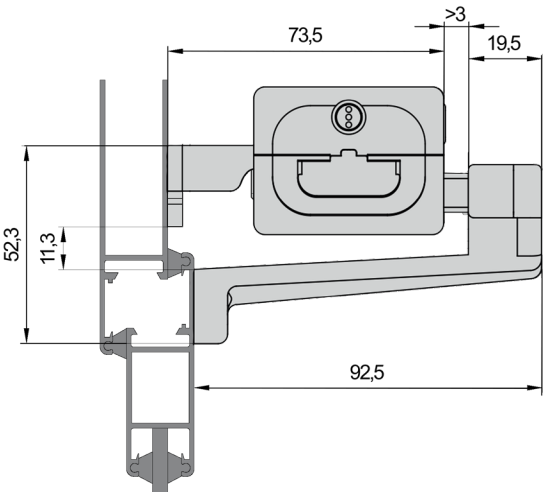
Cover for outward opening

SILVER ANODIZED	48279R
BLACK RAL 9005	48281T
WHITE RAL 9010	48280S



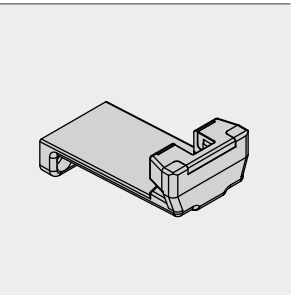
INSTALLATION EXAMPLE 01

On the frame with Z bracket kit and pivoting brackets.



Back bracket kit

INCLUDED - 48290C

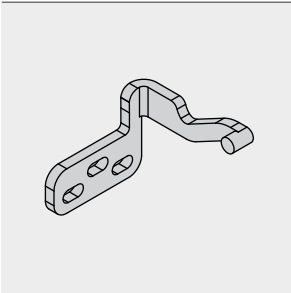
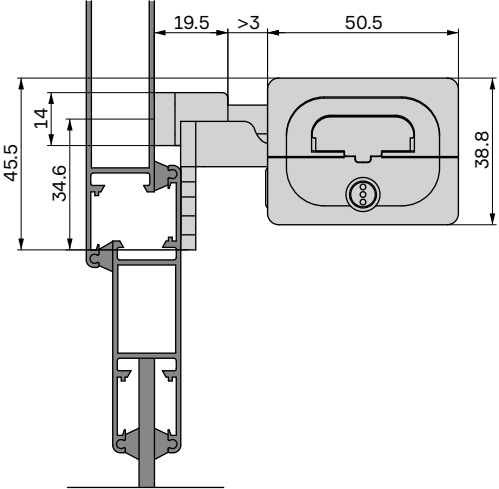


Z bracket kit

GREY	48287Z
BLACK	48288A
WHITE	48289B

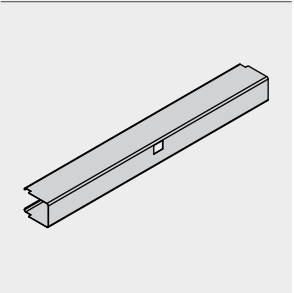
INSTALLATION EXAMPLE 02

On the vent with pivoting bracket kit.



Front bracket kit

INCLUDED - 48286Y



Cover for inward opening

SILVER ANODIZED	48282U
BLACK RAL 9005	48284W
WHITE RAL 9010	48283V