

HINGES TECHNOLOGY



HISTORY

HISTORY

MAGGI HINGES TECHNOLOGY

Maggi was founded in 1955 and in the last 20 years has specialized in the production of technical hinges for fire, armored and heavy doors.

Produces a series of low frictions hinges thanks to the patented system ROLL, ensuring a high level of quality. The various patents and collaborations with industry leaders assure a constant and high level of quality.

The idea of developing the hinges with a low coefficient of friction is born from an intuition of Rinaldo Maggi, founder of the company, observing the operation of the doors with conventional hinges noted that “using hinges with high values of friction is like using a sport car with a handbrake on.” Based on this observation, he developed the system ROLL.

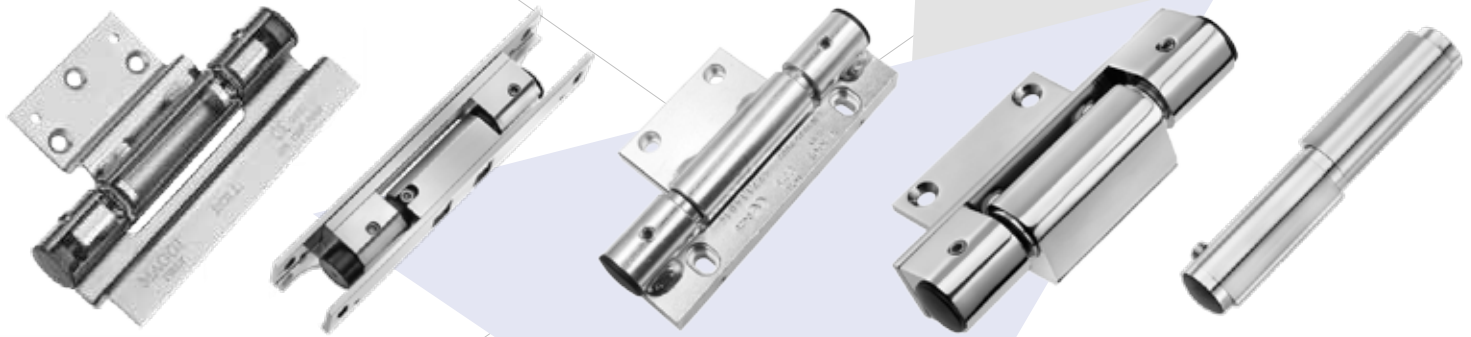


MAGGI

HINGES TECHNOLOGY

PRODUCTS

PRODUCTS



SYSTEM ROLL

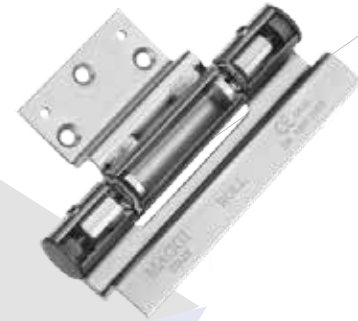
*It is a system with 3 spheres which eliminates friction thus making easier to open the doors.
With this system, the sliding friction of the pins has become a rolling friction.*

Maggi's system

ROLL SYSTEM

SUPPORTING

CE EN 1935.2002, grade 14, 160 Kg.



ROLL+SPRING SYSTEM

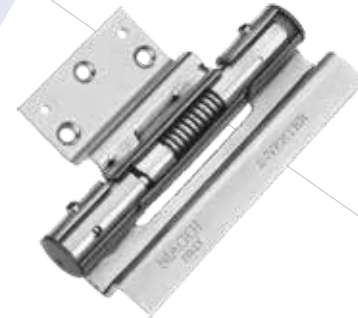
UNCONTROLLED SELF-CLOSING

CE prEN15887

INVERTER SYSTEM

CONTROLLED SELF-CLOSING

CE EN 16034 300mm/sec



NO FRICTION

ROLL

Patented

- Supports the door
- CE EN 1935-2002 Grade 14
- Adjustable 4 mm in height
- Tested on doors of 160 kg for 200,000 cycles
- It easily moves heavy doors because, thanks to the 3 spheres of roll system, it does not create friction
- Possible in stainless steel AISI 316

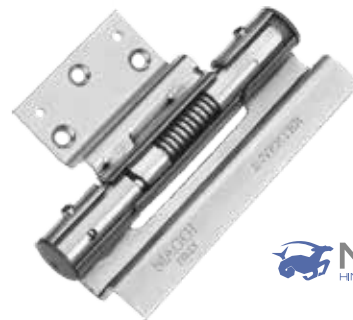


SPRING & SUPPORT

ROLL + SPRING

Patented

- Supports the door
- Close the door thanks to the energy stored in the spring
- Adjustable 4 mm in height.
- Complies with the requirements of the draft standard prEN 15887
- Tested on doors of 160 kg for 200,000 cycles
- Possible in stainless steel AISI 316



TORQUE CONTROL

INVERTER

Patented

- Closes the door by adjusting the closing torque
- It respects the limit of 300 mm / sec according to CE EN 16034
- Not affected by climatic variations
- Adjustable final latch
- Tested on doors of 160 kg for 200,000 cycles.
- Possible in stainless steel AISI 316

NO FRICTION

ROLL

Patented

- Supports the door
- CE EN 1935:2002 Grade 14
- Adjustable 4 mm in height
- Tested on doors of 160 kg for 200,000 cycles
- It easily moves heavy doors because it does not create friction.



SPRING & SUPPORT

ROLL + SPRING

Patented

- Supports the door
- Close the door thanks to the energy stored in the spring
- Adjustable 4 mm in height.
- Complies with the requirements of the draft standard prEN 15887
- Tested on doors of 160 kg for 200,000 cycles



TORQUE CONTROL

INVERTER

Patented

- Closes the door by adjusting the closing torque
- It respects the limit of 300 mm / sec according to CE EN 16034
- Not affected by climatic variations
- Adjustable final latch
- Tested on doors of 160 kg for 200,000 cycles.

NO FRICTION

ROLL

Patented

- Supports the door
- CE EN 1935.2002 Grade 14
- Adjustable 4 mm in height
- Tested on doors of 160 kg for 200,000 cycles
- It easily moves heavy doors because it does not create friction
- Stainless steel AISI 316



SPRING & SUPPORT

ROLL + SPRING

Patented

- Supports the door
- Closes the door thanks to the energy stored in the spring
- Adjustable 4 mm in height.
- Complies with the requirements of the draft standard prEN 15887
- Tested on doors of 160 kg for 200,000 cycles
- Stainless steel AISI 316



TORQUE CONTROL

INVERTER

Patented

- Closes the door by adjusting the closing torque
- Respects the limit of 300 mm / sec according to CE EN 16034
- Not affected by climatic variations
- Adjustable final latch
- Tested on doors of 160 kg for 200,000 cycles
- Stainless steel AISI 316

roll tornita

ROLL TORNITA

Patented

This hinge uses the ROLL system, it's 3 spheres system that eliminates the frictions, facilitates easy handling and increases the accessibility of doors up to 160 kg.



SPRING TORNITA

The first drop profile hinge with spring

Has a spring inside it, which closes the door thanks to the energy stored when it is opened. The force of the springs, left or right, allows to close doors up to 120 kg.

hingy

SOFT CLOSING

HINGY

Patented

- Fast installation with 4 screws
- Suitable for every kind of gates with hinges
- Soft gate closure
- Adjustable final latch
- Reversible
- Visually discreet
- Not affected by climatic variations
- Tested for 200.000 cycles



HINGY®

Closing a gate? HINGY does it!



IMPROVE ACCESSIBILITY

Easy for seniors, children and less able;
5Nm as the maximum opening torque compared to 47 Nm of a hydraulic doorcloser.

EASY MAINTENANCE

Unlike the doorcloser, you only need to grease the hinges at least every 30/50.000 cycles or 6 months.



NO DEPENDENCE ON CLIMATIC VARIATIONS

HINGY doesn't contain any liquid.
Does not suffer performance changes with thermal shocks like the hydraulic doorcloser.

VISUALLY DISCREET – VANDALISM

Unlike the doorcloser, HINGY is not exposed to vandalism.

kit uncontrolled self-closing

NO FRICTION KIT ROLL DIN

Patented

- Supporting and self-closing kit with adjustable force
- The hinge ROLL supports door up to 160 kg and ensures a movement without friction
- CE EN 1935.2002 Grade 14
- Adjustable in height 4 mm
- The hinge DIN closes the door and the closing force is adjustable in 6 positions
- Reversible
- The hinges are galvanized and ready for painting
- All plastic materials are PA6 – self-extinguishing



SPRING & SUPPORT KIT ROLL + ROLL SPRING

Patented

- Supporting and self-closing kit with adjustable force
- The hinge ROLL supports door up to 160 kg and ensures a movement without friction
- CE EN 1935.2002 Grade 14
- Adjustable in height 4 mm
- The hinge ROLL+SPRING supports and close the door
- The closing force is adjustable in 12 positions
- Reversible
- The hinges are galvanized and ready for painting
- All plastic materials are PA6 – self-extinguishing

TORQUE CONTROL KIT ROLL + INVERTER 2

Patented

- Supporting and self-closing kit with adjustable closing torque and force
- The hinge ROLL supports door up to 160 kg and ensures a movement without friction
- CE EN 1935.2002 Grade 14
- Adjustable in height 4 mm
- The hinge INVERTER allows adjusting the closing force and closing torque to 300mm/sec (CE EN16034). It is a mechanical system; it does not contain oil and therefore does not suffer from climatic variations
- Reversible
- The hinges are galvanized and ready for painting
- All plastic materials are PA6 – self-extinguishing



TORQUE CONTROL KIT ROLL + ROLL INVERTER 3

Patented

- Supporting and self-closing kit with adjustable closing torque and force for very heavy doors
- The hinge ROLL supports door up to 160 kg and ensures a movement without friction
- CE EN 1935.2002 Grade 14
- Adjustable in height 4 mm
- The hinge INVERTER allows adjusting the closing force and closing torque to 300mm/sec (CE EN16034). It is a mechanical system; it does not contain oil and therefore does not suffer from climatic variations
- Reversible
- The hinges are galvanized and ready for painting
- All plastic materials are PA6 – self-extinguishing

NO FRICTION KIT HEAVY DOOR 2

Patented

- Supporting kit
- The hinge ROLL supports door up to 160 kg and ensures a movement without friction
- CE EN 1935.2002 Grade 14
- Adjustable in height 4 mm
- Reversible
- The hinges are galvanized and ready for painting
- All plastic materials are PA6 – self-extinguishing



NO FRICTION KIT HEAVY DOOR 3

Patented

- Supporting kit for very heavy door
- The hinge ROLL supports door up to 160 kg ensuring a movement without friction
- CE EN 1935.2002 Grade 14
- Adjustable in height 4 mm
- Reversible
- The hinges are galvanized and ready for painting
- All plastic materials are PA6 – self-extinguishing

NO FRICTION

ROLL TORNITA SUPPORTING KIT

Patented

- Supporting kit
- The hinge ROLL TORNITA supports door up to 160 kg and ensures a movement without friction
- Adjustable in height 5 mm
- Reversible
- The galvanized pins are removable to allow a proper painting of the frame
- Not available in stainless steel
- All plastic materials are PA6 – self-extinguishing



SPRING & SUPPORT

SPRING TORNITA KIT

Patented

- Supporting and self-closing kit with adjustable force
- The hinge ROLL TORNITA supports door up to 160 kg and ensures a movement without friction
- Adjustable in height 5 mm
- The hinge SPRING TORNITA closes the door and the closing force are adjustable in 12 position
- Not reversible
- The galvanized pins are removable to allow a proper painting of the frame
- Not available in stainless steel
- All plastic materials are PA6 – self-extinguishing

**T.C.
EKONOMİ BAKANLIĞI
İthalat Genel Müdürlüğü**

Sayı : 98183563 - 220.02 - E.113454
Konu : Önlemlerin Etkisiz Kılınmasına Karşı
Soruşturma Neticesi

20.10.2017

MAGGI S.R.L.'YE
(Via SS Cosma e Damiano 55 23801, Calolziocorte (LC) ITALY)

Bakanlığımız tarafından, İspanya, İtalya, Yunanistan ve Tayland menşeli "mentşeler, sabit askılıklar, sapka askıları, direkleri ve çekmece rayları"na yönelik olarak 17/11/2016 tarihli ve 29891 sayılı Resmi Gazete'de yayımlanan İthalatta Haksız Rekabetin Önlenmesine İlişkin Tebliğ (Tebliğ No: 2016/52) uyarınca başlatılan önlemlerin etkisiz kılınmasına karşı soruşturma tamamlanmıştır.

Soruşturma sonuçlarını içeren ekte sunulan Tebliğin bir örneğine Elektronik İthalat Sistemi'ne ait internet sitesinden (<http://www.ekonomi.gov.tr>) sırasıyla "İthalat", "Ticaret Politikası Savunma Araçları", "İzleme ve Önlemlerin Etkisiz Kılınması", "Yürürlükteki Önlemler" linklerine tıklayarak ulaşılması mümkündür."

Bilgilerinizi rica ederim.

Alper Sadık TOKÖZLÜ
Bakan a.
Daire Başkanı

ABUL İLE KAYIT
20 Ekim 2017

NO DUMPING TAX

100% MADE IN ITALY

"Bu belge, 5078 sayılı Elektronik İmza Kanununun 5. maddesi gereğince güvenli elektronik imza ile imzalanmıştır."

T.C. Ekonomi Bakanlığı İthalat Genel Müdürlüğü
Sıhhiye Mah. 2178. Sk. No:3/3 06530 Çankaya/Ankara
Telefon: 03122040953 Faks: 03122040803
E-mail: ihalyk@ekonomi.gov.tr Elektronik Aj: www.ekonomi.gov.tr

TEBLİĞ

Ekonomi Bakanlığından:**İTHALATTA HAKSIZ REKABETİN ÖNLENMESİNE İLİŞKİN TEBLİĞ**

(TEBLİĞ NO: 2017/21)

BİRİNCİ BÖLÜM**Genel Bilgi ve İşlemler**

MADDE 10 – (1) Soruşturma çerçevesinde elde edilen bilgiler doğrultusunda, aşağıda yer alan tabloda gösterildiği üzere İspanya, İtalya, Yunanistan ve Tayland menşeli olarak beyan edilen ve/veya bu ülke çıkışlı soruşturma konusu ürün ithalatında, İthalatta Haksız Rekabetin Önlenmesine İlişkin Tebliğ (Tebliğ No: 2016/53) ile ÇHC menşeli ürün için yürürlükte bulunan dampedinge karşı kesin önlem ile aynı tutarda dampedinge karşı kesin önlemin yürürlüğe konulmasına karar verilmiştir.

GTİP/GTİP	Eşyanın Tanımı	Menşe Ülke	Firma	Dampinge Karşı Önlem (ABD Doları /KG)
8302.10	Menteşeler (Sivil hava taşıtlarında kullanılanlar hariç)	İspanya	Tüm Firmalar	1,64
		İtalya	Maggi S.R.L.	0
			Diğerleri	1,64
		Yunanistan	Tüm Firmalar	1,64
8302.50.00.00.00	Sabit askılıklar, şapka askıları, dirsekler, benzeri eşya	Tayland	Tüm Firmalar	1,64
		İspanya	Tüm Firmalar	1,64
		İtalya	Maggi S.R.L.	0
			Diğerleri	1,64
8302.42.00.00.00	Diğerleri, mobilyalar için olanlar (Sivil hava taşıtlarında kullanılanlar ve koltuk amortisörleri hariç)	Yunanistan	Tüm Firmalar	1,64
		Tayland	Tüm Firmalar	1,64
		İspanya	Tüm Firmalar	0,75
		İtalya	Maggi S.R.L.	0
			Diğerleri	0,75
		Yunanistan	Tüm Firmalar	0,75
		Tayland	Tüm Firmalar	0,75

(2) İthalatta Haksız Rekabetin Önlenmesine İlişkin Tebliğ (Tebliğ No: 2016/53) ile ÇHC menşeli ithalat için yürürlükte olan dampedinge karşı önlemler İthalatta Haksız Rekabetin Önlenmesi Hakkında Mevzuat hükümleri çerçevesinde yapılacak değişiklikler bu önlem için de geçerlidir.

Uygulama

MADDE 11 – (1) Gümrük idareleri, 10 uncu maddede yer alan tabloda gümrük tarife pozisyon numarası, tanımı ve menşe/çıkış ülkesi belirtilen ürünün, diğer mevzuat hükümleri saklı kalmak kaydıyla, serbest dolaşıma giriş rejimi kapsamında ithalatında karşısında gösterilen miktarda dampedinge karşı kesin önlemi uygular.

Yürürlük

MADDE 12 – (1) Bu Tebliğ yayımı tarihinde yürürlüğe girer.

Yürütme

MADDE 13 – (1) Bu Tebliğ hükümlerini Ekonomi Bakanı yürütür.

NO DUMPING TAX

100% MADE IN ITALY



Via Ss. Cosma e Damiano 55, 23801 Calolziocorte (LC) - Italy Tel: +39 0341 641173 - Fax: +39 0341 646448
info@rollmaggi.it - www.rollmaggi.it