



saccio

METAL SYSTEMS  
**DISCOVER**

[www.saccio.com.tr](http://www.saccio.com.tr)

# WHAT ARE METAL CLADDING SYSTEMS?

Metal cladding systems elevate the functionality and aesthetics of both new constructions and renovations of existing buildings.

Key performance factors for metal cladding include durability, fire resistance, thermal insulation (U-value), acoustic insulation, environmental factors, and wind resistance.

SACCIO offers a variety of materials, sizes, and color options, including expanded metal, perforated metal, and decorative cut metal, to meet the aesthetic, technical, and economic needs of projects.

SACCIO's comprehensive cladding systems, including sun control panels, movable facades, and 3D facade systems, showcase the limitless possibilities of their products.

## Metal Facade Systems

enhancing both the  
functionality and aesthetics of  
projects for new  
constructions and exterior  
renovations of existing  
buildings.





# FACADE CLADDING SYSTEMS

Cladding systems, also known as double-skin facades, provide thermal, wind, and sound insulation with their multi-layered structure. These systems improve the building's thermal efficiency, reducing cooling and heating costs. The space between the inner and outer layers minimizes heat loss and gain, creating a natural "chimney effect."

SACCIO's three-dimensional expanded and perforated metals, along with their bracket solutions, are the most preferred products for these systems.

## Key Features:

- Reduces cooling and heating costs
- Utilizes natural light
- Provides thermal and acoustic insulation
- Facilitates natural ventilation
- Offers unique, value-added design







# CLADDING DETAIL SOLUTIONS

SACCIO secures expanded, perforated, and decorative cut metal panels to box profiles with anchors and various intermediate elements. These panels, which can be integrated into different building and construction systems, offer project-specific solutions with a variety of frame, bend, and connection types. Our technical team can develop unique detail solutions for our customers.

## Facade Cladding Projects



01

SPECIAL  
SOLUTIONS



02

DETAIL  
SOLUTIONS



03

LOCAL  
SOLUTIONS



# SUN BREAKER SYSTEMS

SACCIO Sun Breaker offers an aesthetic system for commercial, residential, and industrial buildings that provides ventilation, rain protection, sand trapping, sun protection, noise reduction, security, and privacy. This system can be customized according to external conditions and designs for leading companies in the industry. Contact SACCIO METAL A.Ş. to work with us.

## **Key Features:**

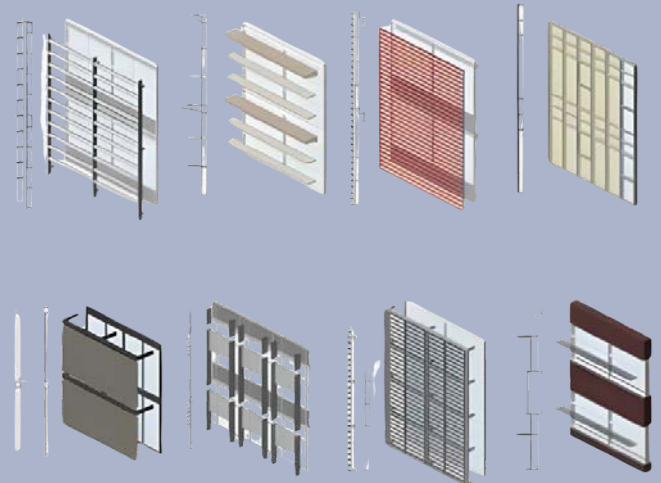
- Ventilation
- Rain protection
- Sand trapping
- Sun protection
- Noise reduction
- Security
- Privacy





# SOLAR BREAKING DETAIL SOLUTIONS

SACCIO Sun Breaker, customizable according to external conditions, offers innovative and aesthetic designs for leading companies in the industry.

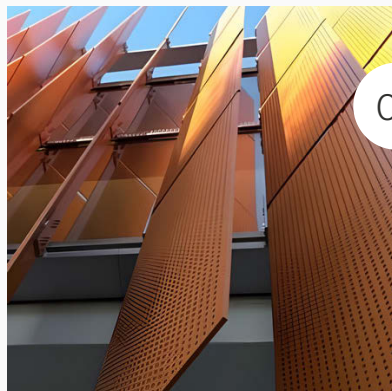


## Solar Shading Projects



01

SPECIAL  
SOLUTIONS



02

DETAIL  
SOLUTIONS



03

LOCAL  
SOLUTIONS





# MOVABLE FACADE SYSTEMS

Movable Facade Systems Movable facades offer visual and functional advantages to buildings. They provide light and shade control indoors while creating a dynamic and variable appearance on the exterior facade. These systems can be supplied manually or automated, with options including sliding, folding, sliding & folding, and pivot, customized for specific projects.

These solutions meet both aesthetic and functional requirements of buildings.

## **Most Preferred Products:**

- Expanded metals
- Perforated metals
- Trapezoidal section products
- Custom materials and cuts for specific projects

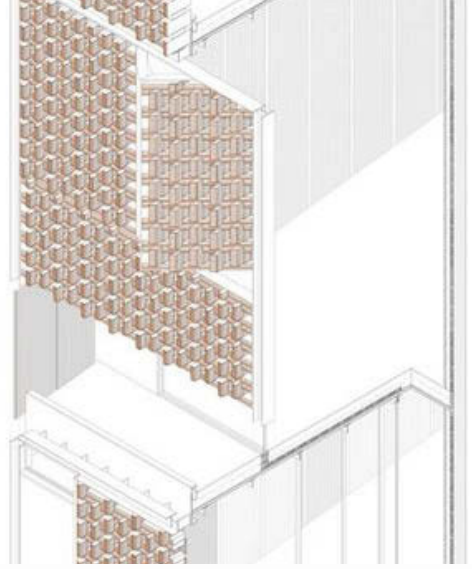
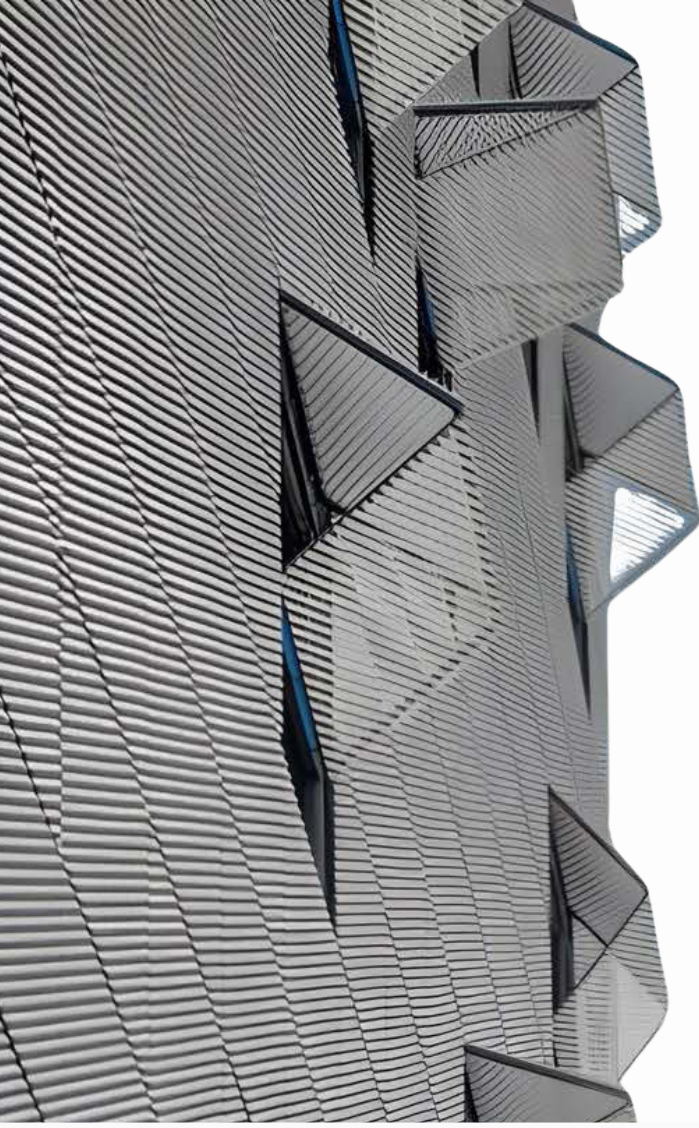






# MOVABLE FACADE DETAIL SOLUTIONS

These solutions meet both the aesthetic and functional requirements of buildings.



## Hareketli Cephe Projeleri



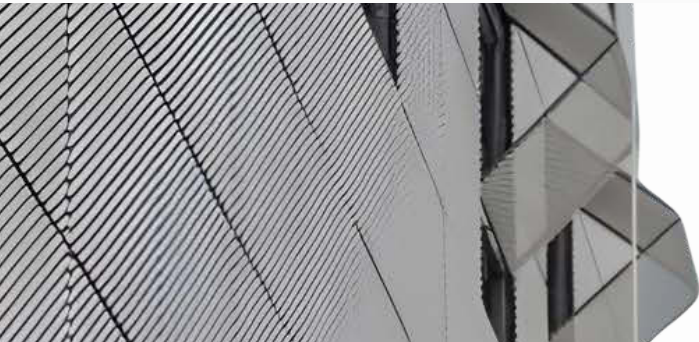
SPECIAL  
SOLUTIONS



DETAIL  
SOLUTIONS



LOCAL  
SOLUTIONS





# 3D FACADE SYSTEMS

3D facade systems offer unique aesthetic and functional advantages to buildings. These systems enhance projects with a modern and striking character by adding depth and dynamic appearance to the facade surface. Created with materials such as expanded metals, perforated metals, and custom patterned panels, 3D facades strengthen the architectural identity of buildings.

Advantages of 3D facade systems include: These systems enhance projects by meeting both aesthetic and technical requirements of buildings, adding value to the projects.

## Key Features:

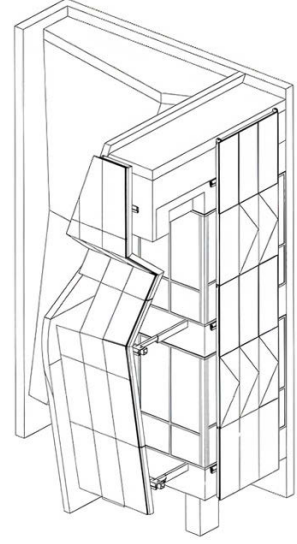
- **Aesthetic Diversity:** Enhances the visual appeal of buildings with different patterns and forms.
- **Light and Shadow Play:** Creates dynamic light and shadow effects due to surface depth and angles.
- **Durability:** Long-lasting and resilient thanks to high-quality materials.
- **Heat and Acoustic Insulation:** Additional layers and gaps contribute to the building's thermal and acoustic insulation.





# 3D FACADE DETAIL SOLUTIONS

These solutions meet both the aesthetic and functional requirements of buildings.

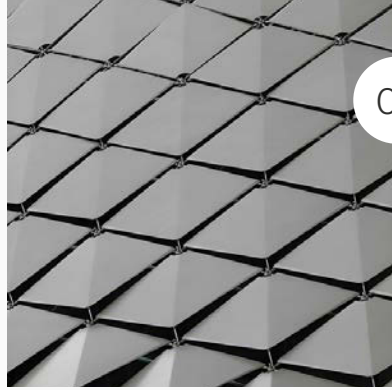


## 3 Boyutlu Cephe Projeleri



01

SPECIAL  
SOLUTIONS



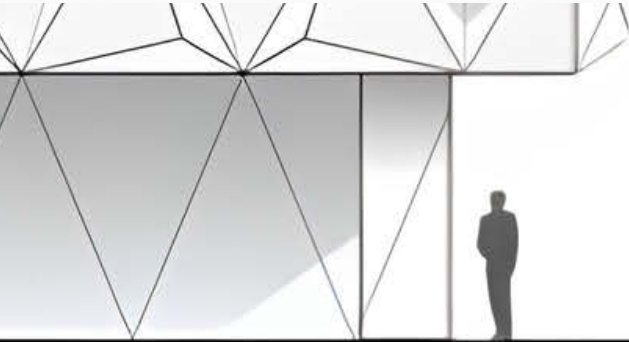
02

DETAIL  
SOLUTIONS



03

LOCAL  
SOLUTIONS





# EXTERNAL CLADDING SYSTEMS

External cladding systems enhance the appearance and functionality of buildings. Here are some examples:

## **CANOPY**

Canopy systems protect entrance areas from rain and sun while adding aesthetic appeal to the structure.

## **SOFFIT**

Soffits divert rainwater away from facades and complete the building's appearance.

## **FASCIA**

Fascia coverings protect wall tops and facilitate water drainage away from the building.

## **FRIEZE PANEL**

Frieze panel systems cover the front face of the roof, giving the structure a clean and finished appearance.

## **BALCONY RAILING AND SEPARATOR**

Balcony railings and separators provide safety and privacy, enhancing the aesthetic and usability of balconies.

These systems meet the aesthetic and functional needs of buildings, adding value to projects.

## OUTDOOR COATING SYSTEMS

\*Canopy

\*Eave

\*Harpu

\*Forehead coating

\*Balcony railing

\*Separator





# CANOPY

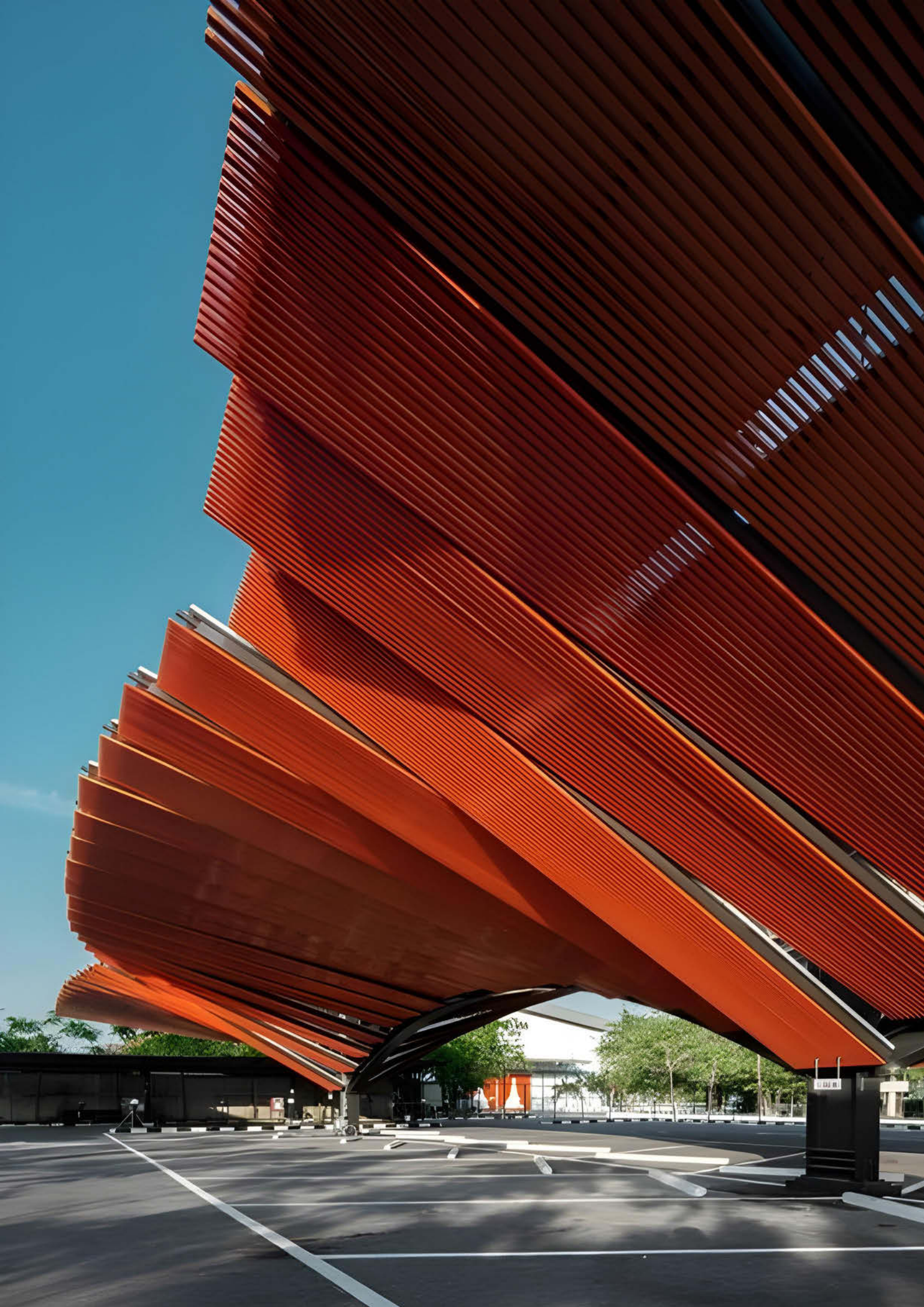
Metal canopy systems are an ideal choice for functionality and aesthetics. These systems enhance the exterior appearance of buildings and provide protection to entrance areas. Canopies also function to shade from the sun, reducing glare and heat.

Canopy systems can be combined in various shapes, materials, colors, and layers. You can see various application examples in SACCIO reference projects.

## **Key Features:**

- Weather Resistance
- Shade Efficiency
- Low Maintenance Requirements









# FRINGE, COAT, FACE COVERING

Aluminum eaves, fascias, and soffit claddings are custom-made to meet project requirements and offer unique solutions. These components serve as excellent complements to Saccio Metal Facade Cladding applications. With their superior features, aluminum eaves, fascias, and soffit claddings enhance the aesthetic and functional value of your projects.

## **Key Features:**

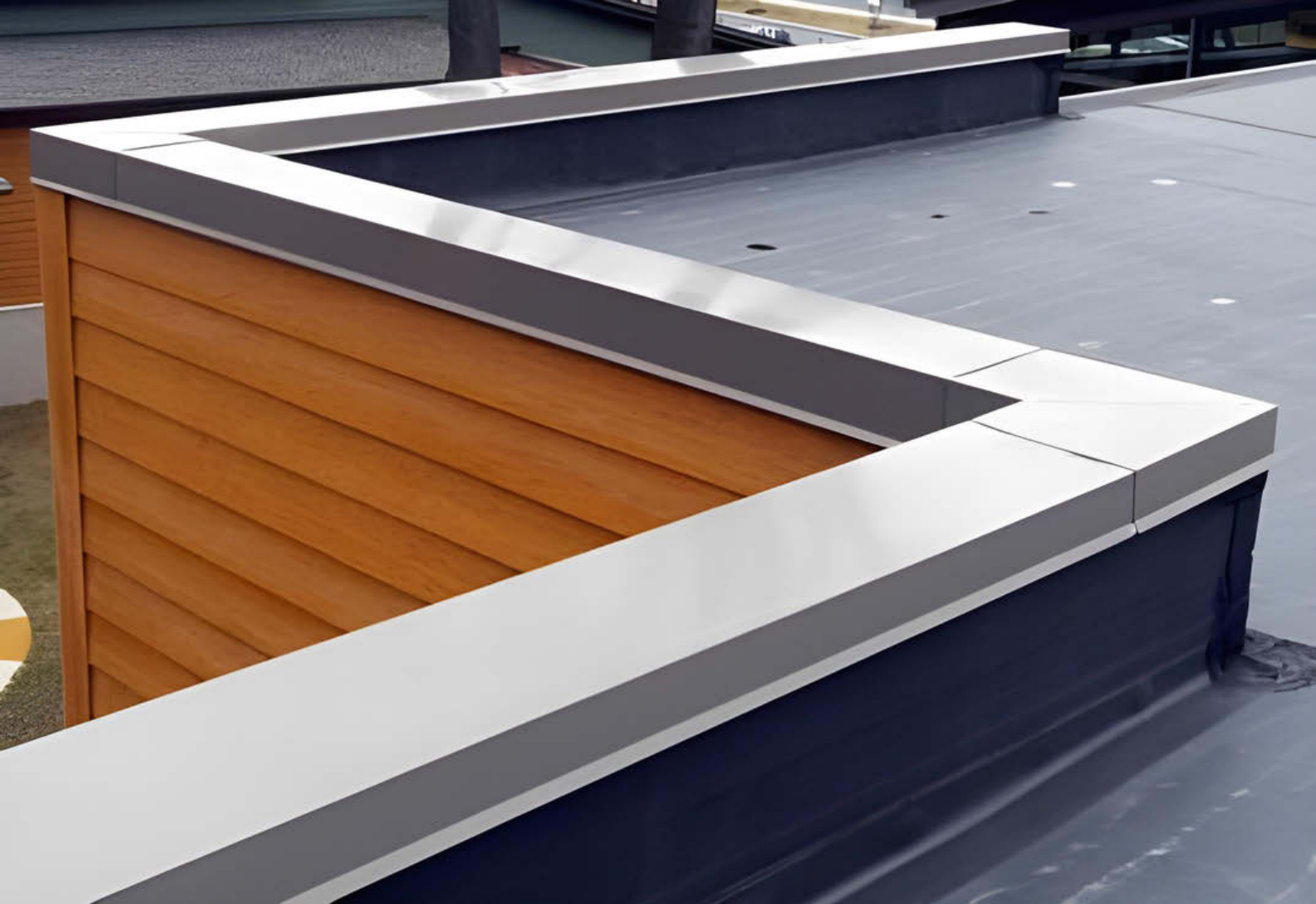
**Longevity and Low Maintenance:** Thanks to its durable structure, it is long-lasting and requires minimal maintenance.

**Easy Installation:** It provides quick and easy installation with practical assembly features.

**Color Variety:** It meets all design and aesthetic expectations with a wide range of color options.

**Versatility:** Ideal for both new construction projects and renovation works.







# BALCONY RAILWAY SYSTEMS

SACCIO panels provide both security and privacy for balcony railings and dividers while offering an eye-catching appearance. Made from stainless steel and aluminum, expanded metal, perforated metal, and pattern-cut metal panels are highly durable and resistant to corrosion. These customizable materials are popular design elements for balconies, stairs, and stairwells, creating a unique and striking facade appearance.

## **Key Features:**

- “Easy Installation: Practical assembly features allow for quick and easy installation.
- Color Variety: Wide range of color options to meet all design and aesthetic expectations.
- Versatility: Ideal for both new construction projects and renovation works.







# WALKING WAYS

SACCIO offers a wide range of products for walkways, catwalks, stair treads, and access platforms. It provides ideal solutions for both industrial and architectural applications.

Choose SACCIO products for safe, durable, and aesthetic solutions for your projects.

## Key Features:

- **Security and Slip Resistance:** The dual-directional embossed design ensures high slip resistance and effective water drainage, making it perfect for walkways, platforms, scaffolding, and stairs.
- **Easy Installation:** Special extrusion profile frames and connection hole monoblock twist solutions enable quick and easy installation.
- **Wide Product Range:** Available in perforated, embossed, perforated & embossed, and expanded metal options; manufactured from steel, galvanized steel, stainless steel, and aluminum materials.
- **Load Capacity:** Our metal gratings offer low weight and high load capacity, requiring less infrastructure and providing an advantage in steel construction needs









# STEP SOLUTIONS

SACCIO offers a wide range of products for metal stair treads, providing ideal solutions for both industrial and architectural applications.

SACCIO metal stair treads elevate your projects to the next level with safe, durable, and aesthetic solutions.

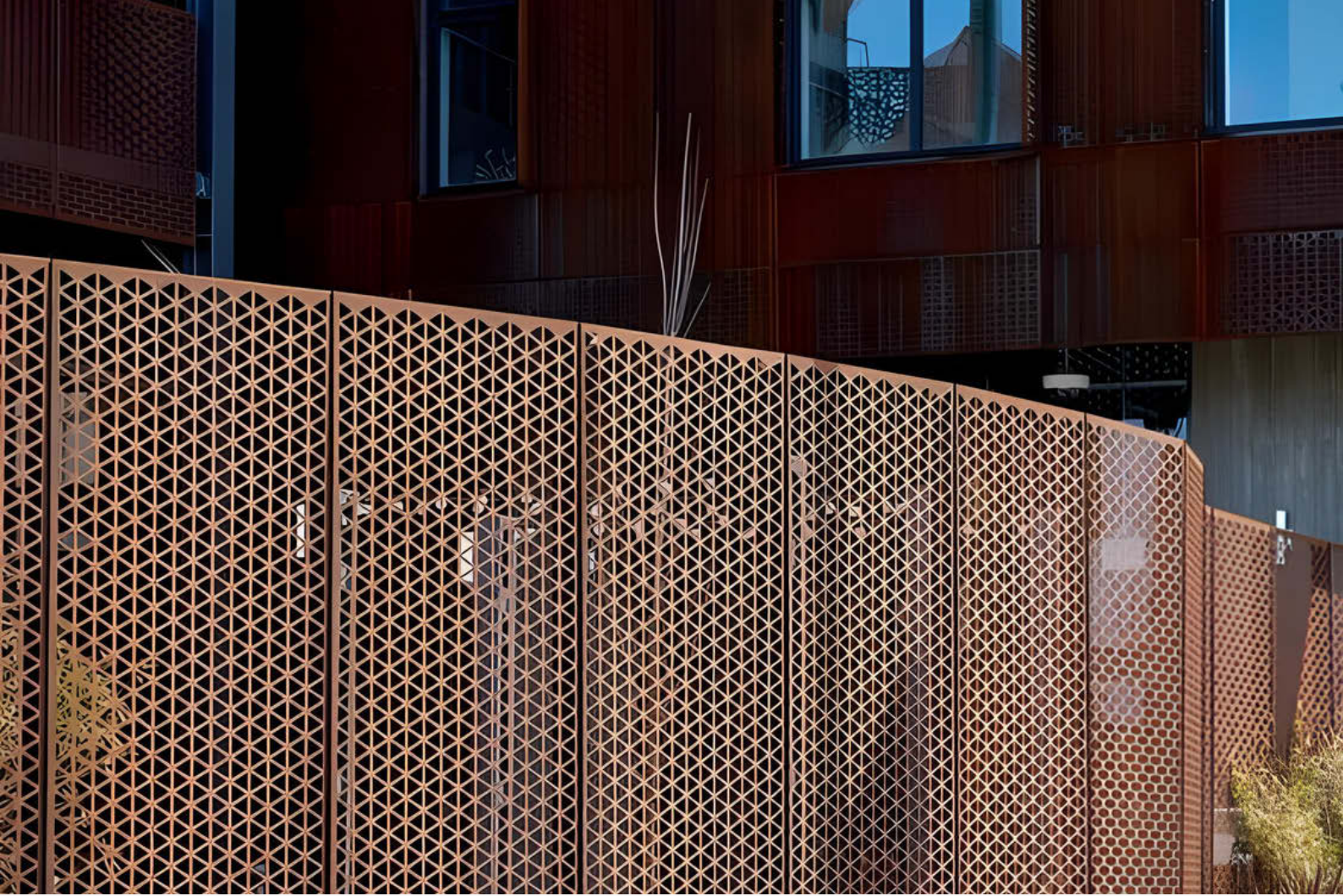
## **Key Features:**

- **Safety and Slip Resistance:** Bidirectional embossed design provides high slip resistance and effective water drainage. Stair treads offer safe and durable use.
- **Easy Assembly:** Special extrusion profile frames and monoblock bending solutions with connection holes provide fast and easy assembly.
- **Wide Product Range:** With perforated, embossed, perforated & embossed and expanded metal options; It is produced from steel, galvanized steel, stainless steel and aluminum materials.
- **Load Capacity:** Our metal steps offer less infrastructure requirement with their low weight and high load capacity, providing an advantage in steel construction needs.









# SECURITY FENCE

Maintenance-free, durable, and customizable metal fences are ideal for public and commercial spaces. These fences combine safety, security, and aesthetic design. SACCIO metal fences are the perfect solution to add both security and aesthetics to your projects.

## Key Features:

- **Visual Coating and Physical Barrier:** Metal fences provide both an aesthetic and protective barrier.
- **Versatility:** Can be used in areas such as gyms, residences, parks, and educational facilities.
- **Customizable Materials:** Can be manufactured in the desired height and with various materials.
- **Multi-Purpose Applications:** Applicable in many areas such as pedestrian bridge barriers, railings, outdoor partition walls, garden fences, and gates.







# OTHER INTERIOR WHAT ARE COATING SYSTEMS?

## **Store Fascias**

Store fascias make the exterior of stores modern and attractive. With customizable designs and durable materials, they reflect your brand identity.

## **Wall Cladding**

Our wall cladding systems provide aesthetics and protection. With options like expanded, perforated, and pattern-cut metal, they add elegance to your walls.

## **Partition Systems**

Partition systems are used to divide open spaces and provide privacy. They are ideal for offices and commercial spaces.

## **Screens**

Screens offer flexible and portable solutions for dividing and organizing spaces. They can be used in various interior layouts.

## **Room Dividers**

Room divider systems separate large areas into smaller, more functional spaces. They integrate seamlessly into interior design with aesthetic and durable materials.

## INTERIOR COATING SYSTEMS

\*Shop pediments

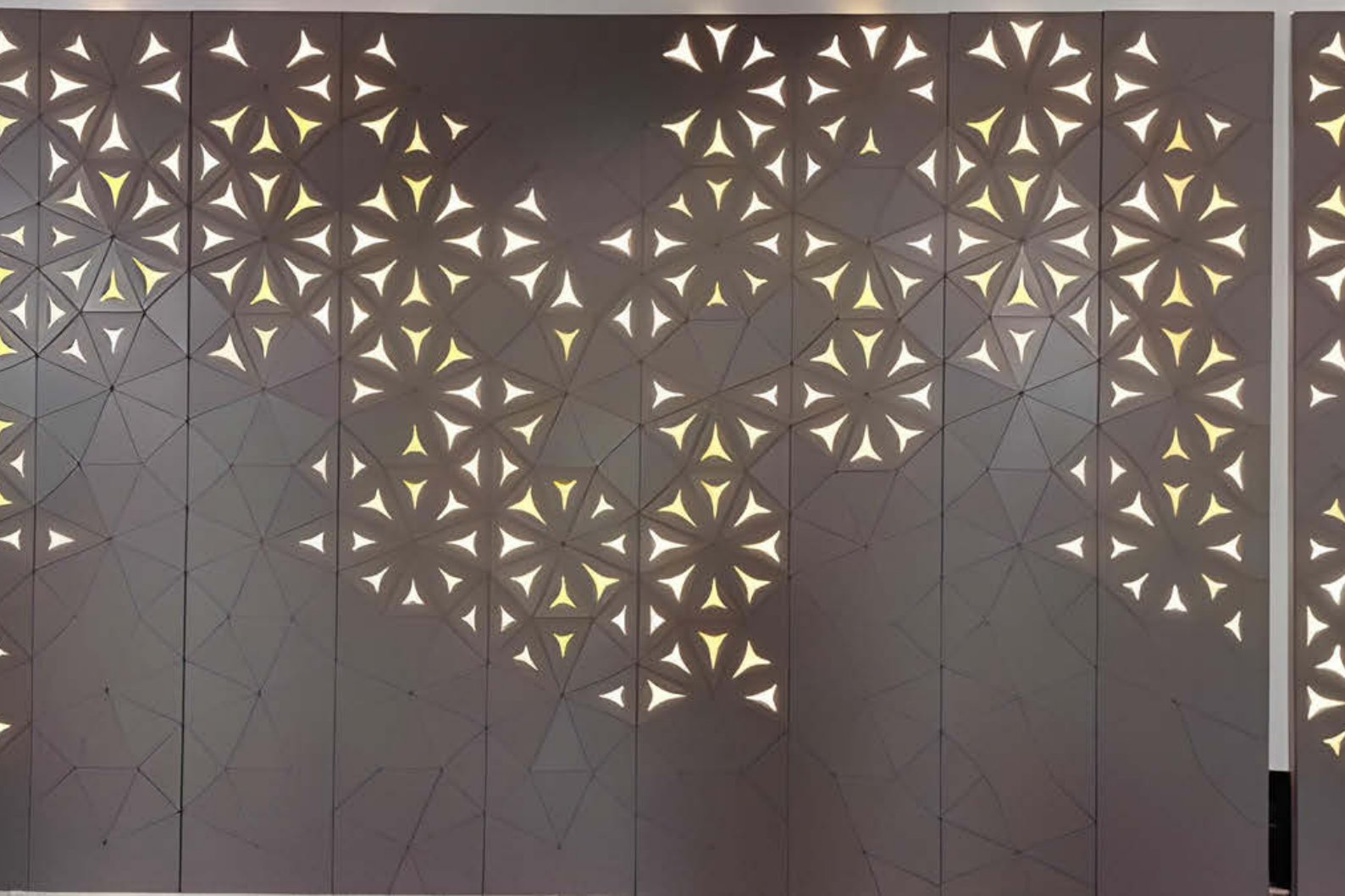
\*Wall covering

\*Separator systems

\*Screen

\*Room partitions





# STORE PEDESTATOR

SACCIO store fascias make the exterior of stores modern and attractive. With customizable designs, they reflect your brand identity, and their durable materials ensure they are long-lasting and easy to maintain.

**Key Features:**

- Customizable Design: Design options that suit your store's identity.
- Durable Materials: Long-lasting use with low maintenance requirements.
- Aesthetic Solutions: Attractive exteriors with a wide range of colors and patterns.







# SEPARATOR

Partition systems are used to divide open spaces and provide privacy. With their aesthetic and functional designs, they are ideal for offices, restaurants, and other commercial spaces. Their customizable structures ensure they blend seamlessly with your space while adding a decorative touch.

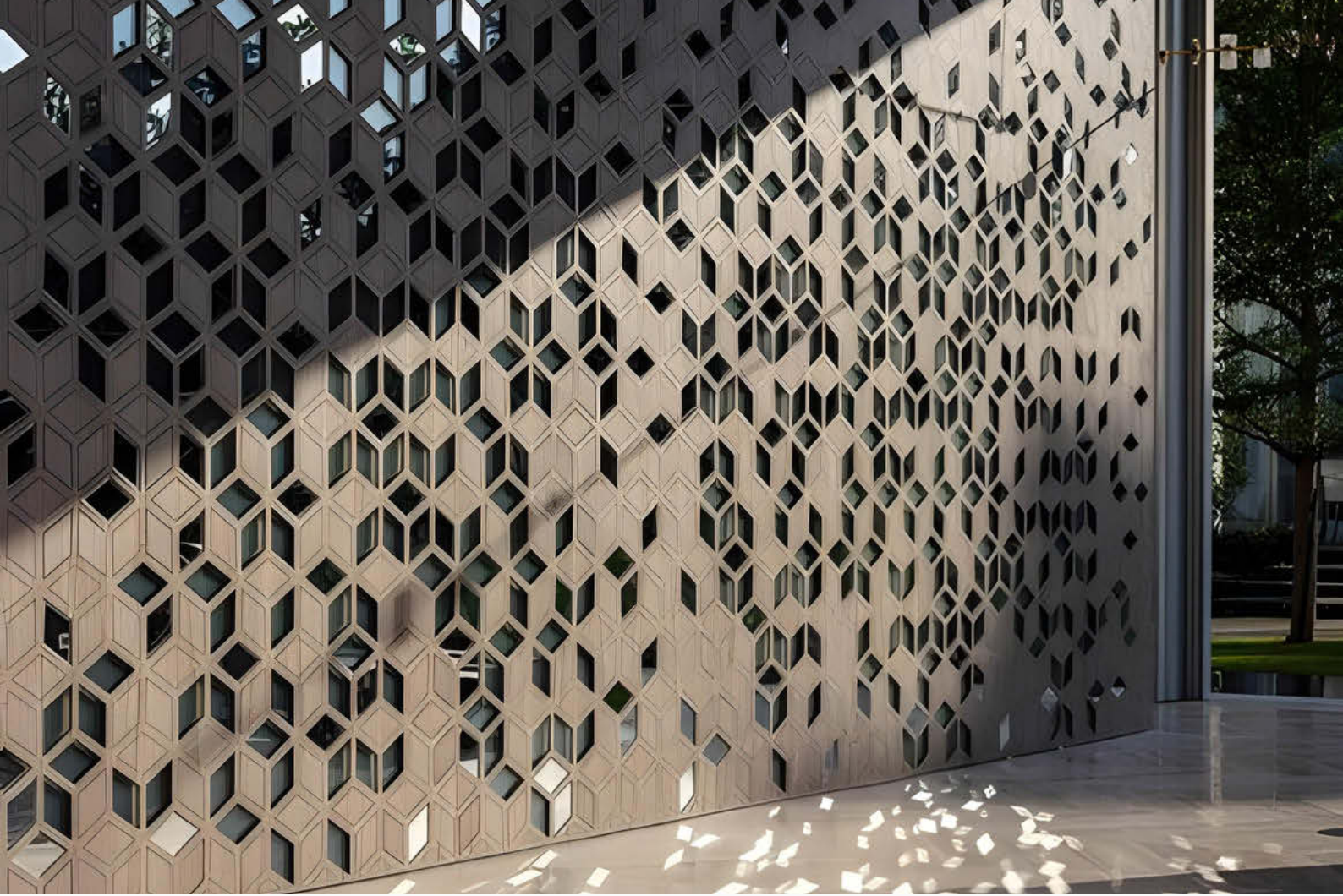
**Key Features:**

- Privacy Provision: Effective partitioning in open spaces.
- Aesthetic Design: Decorative and functional solutions.
- Durability: Long-lasting with low maintenance requirements.









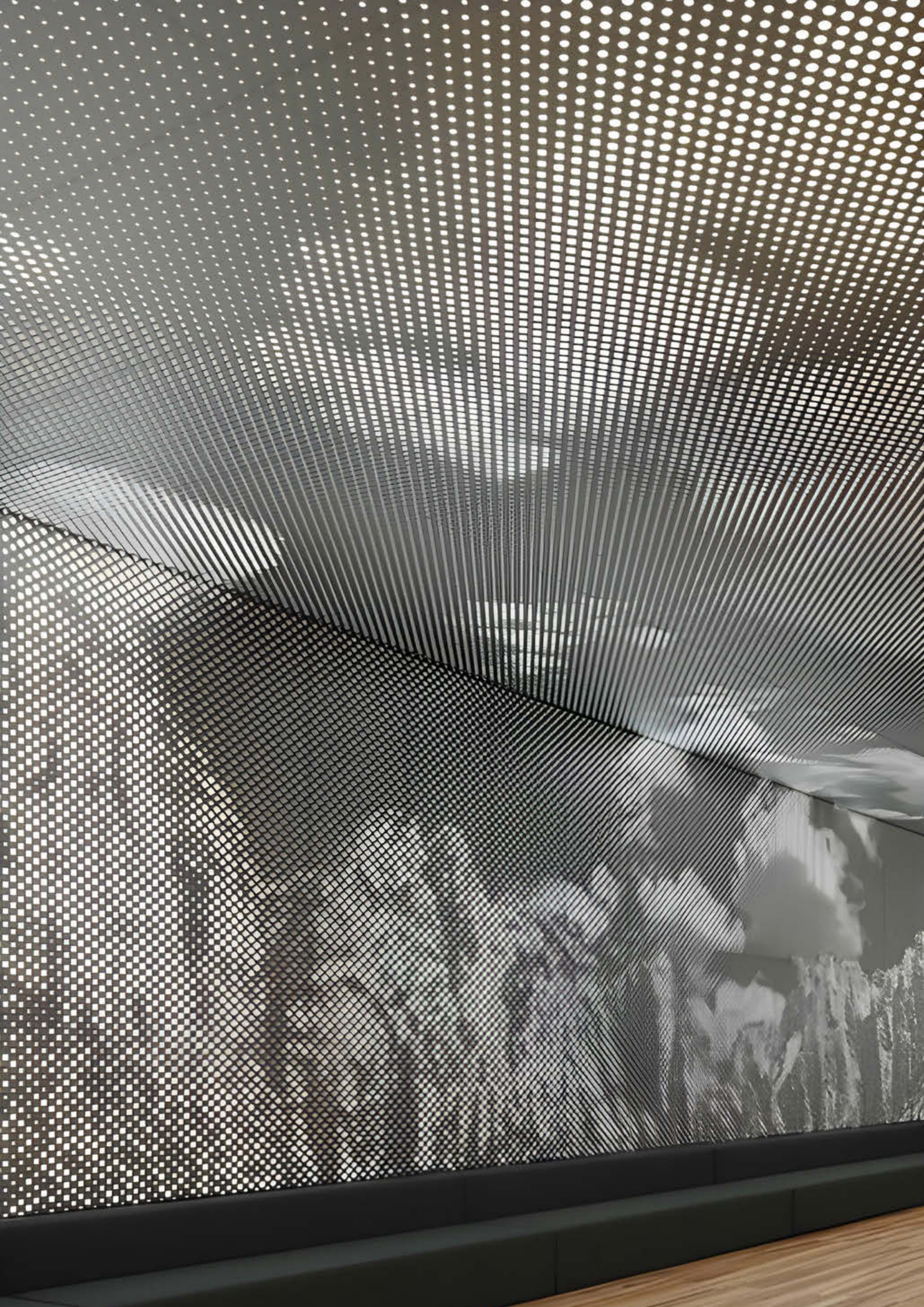
# WALL COVERING

Our wall cladding systems provide both aesthetics and protection for interiors. With options like expanded metal, perforated metal, and pattern-cut metal, they offer design solutions suitable for any space. Easy installation and a variety of color options add elegance to your walls.

## **Key Features:**

- **Easy Installation:** Quick and practical setup.
- **Various Material Options:** Expanded, perforated, and pattern-cut metal choices.
- **Aesthetics and Protection:** Solutions that add elegance and provide protection to your spaces.









# SCREEN

Screens offer flexible solutions for dividing and organizing spaces. Their portable and customizable structures make them suitable for various interior layouts.

## Key Features:

- Flexibility: Portable and easy to set up.
- Customizable: Various material and color options.
- Practical Solutions: Quick and effective use in space organization.









# ROOM DIVISIONS

Room divider systems are ideal for dividing large spaces into smaller, more functional sections. Made from aesthetic and durable materials, these systems seamlessly integrate into interior design.

**Key Features:**

- **Functionality:** Effectively dividing large spaces.
- **Aesthetic and Durability:** Elegant and long-lasting solutions.
- **Customizable:** Design options that suit your space.







# ALWAYS PERFECT

We master, design, develop, and  
produce metal.

saccio  
METAL SANAYİ ANONİM ŞİRKETİ

## Office

Bahçelievler mah. Turgut Reis Cad. No:3/A  
Muratpaşa / ANTALYA

## Factory

Altınova Sinan Mah. 39/1 Sok. No:34  
Kepez / ANTALYA

## Contact

Phone: +90 (242) 250 4 444  
+90 (537) 306 03 57

Web. [www.saccio.com.tr](http://www.saccio.com.tr)  
Mail. [info@saccio.com.tr](mailto:info@saccio.com.tr)